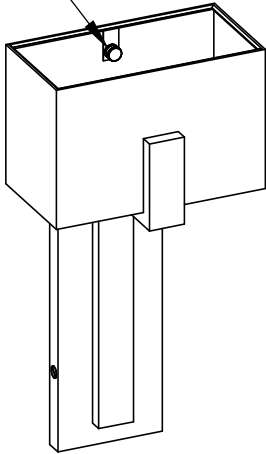
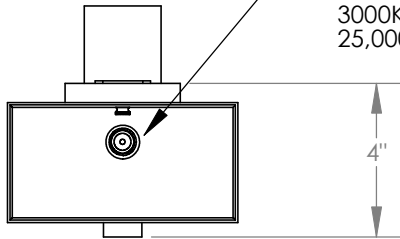


TOP BRASS LIGHTING

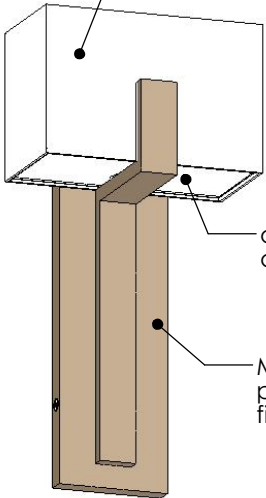
thumb screw
to secure
shade



suggested bulb:
bulb LED 4w Satco S8682,
3000K, 460L, 120v dimmable,
25,000-hr life

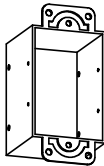


off-white medium
weight linen shade

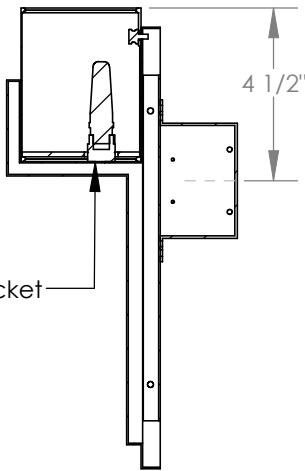
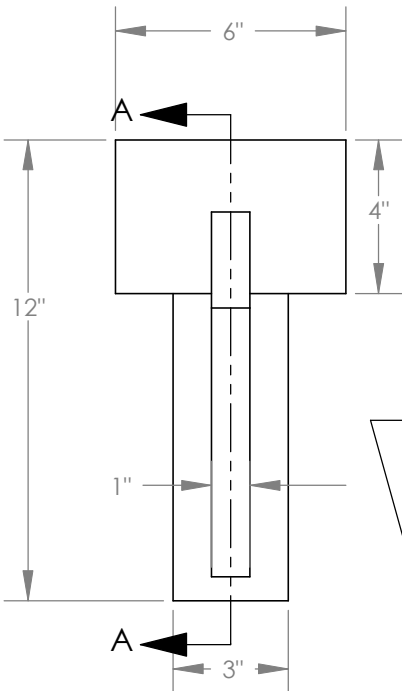


opal
acrylic

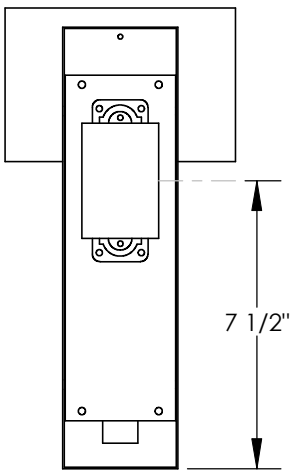
Medium Bronze
painted
finish



mounts to
2" x 3" rectangle
switch box,
(not included)



SECTION A-A



G9 socket

Top Brass # C1420
Mar 18, 2020
kirk.laughton@topbrasslighting.com