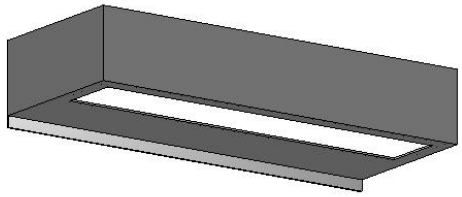
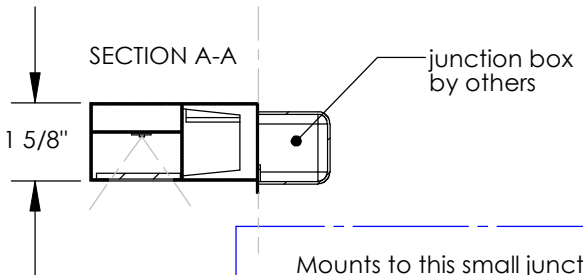
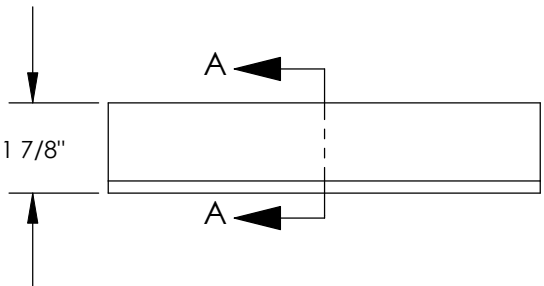
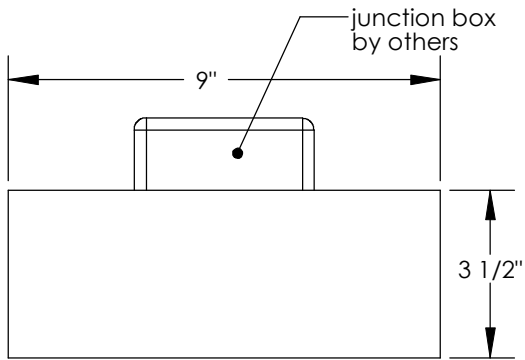
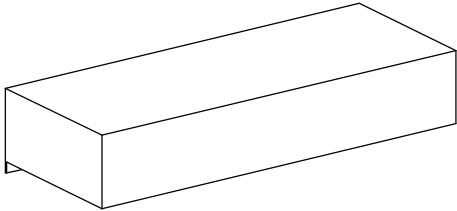
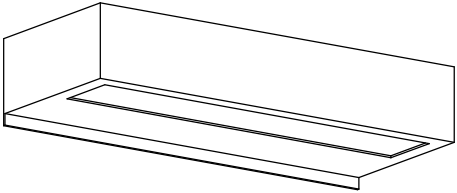


TOP BRASS LIGHTING

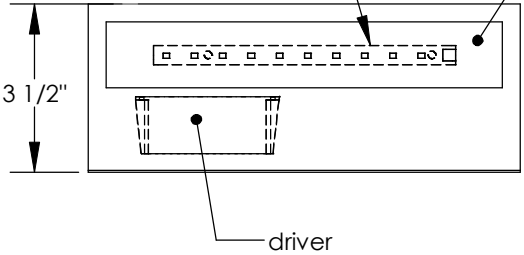


Sherwin Williams
SW 7019 Gauntlet Gray
with "eggshell" sheen
(between matte & semi-gloss)

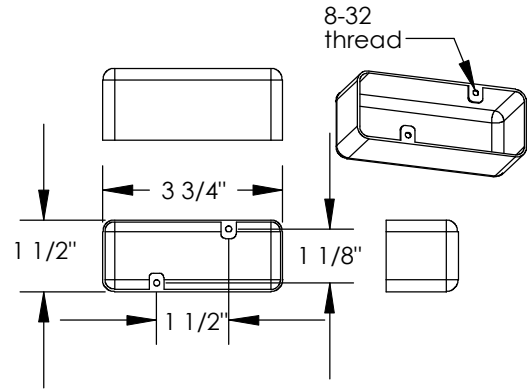


5w dedicated
LED strip, 3000k
670L, non-dimming.

Bottom will have
clear acrylic cover.



Mounts to this small junction box,
Hubble-RTB # 640.



C1454 by Top Brass
Jun 23, 2019